

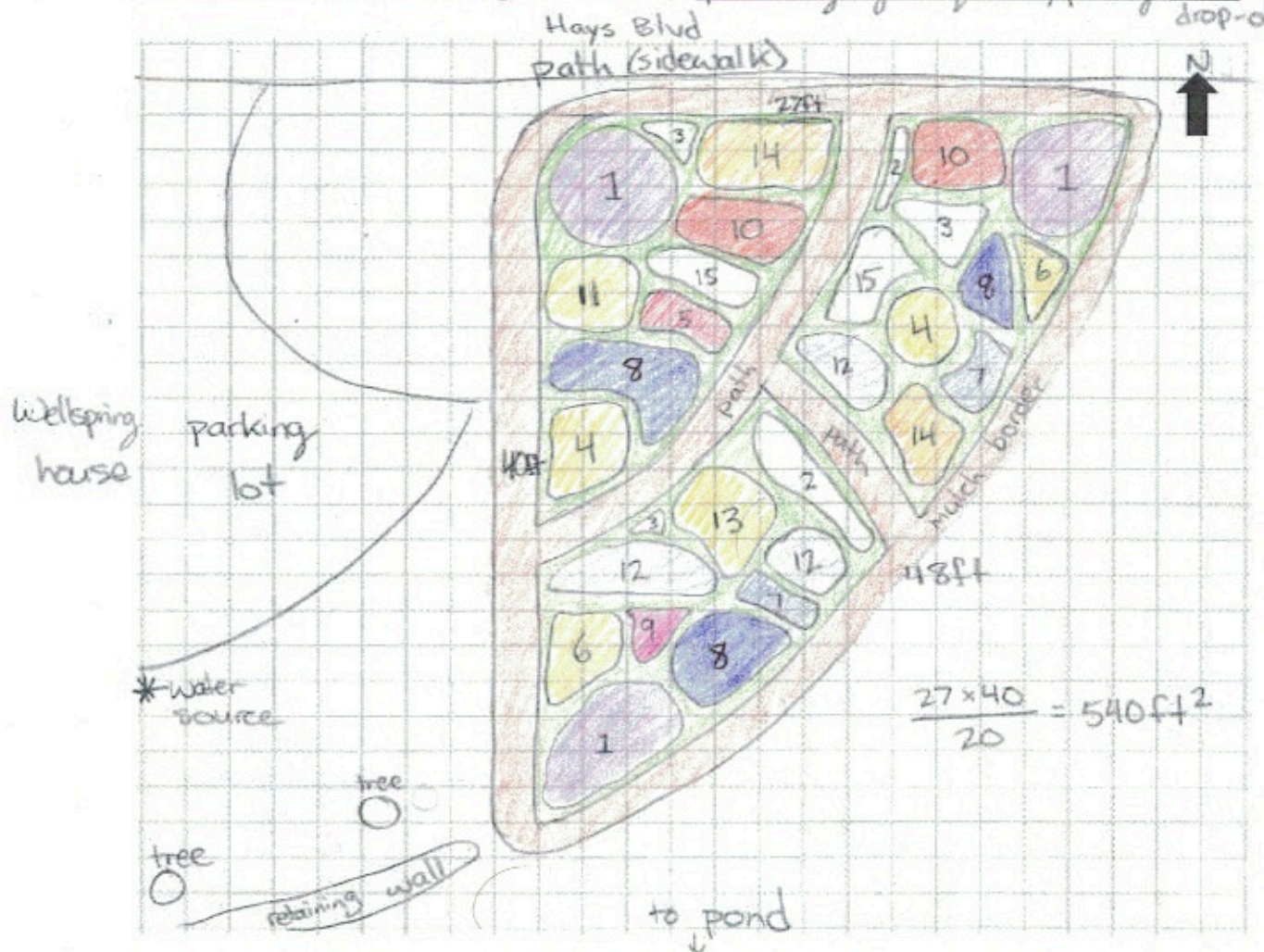
Site Location Description: "Butterfly Wing Gardens" - 15 Hays Blvd (Oak Park)

Soil Type: clay silt sand loam Sun: full (6+ hrs) part (2-6 hrs) shade (<2 hrs)

Moisture: Dry Moist Wet Dimensions & Area: $27 \times 40 \times 48 \approx 540 \text{ft}^2$

Water source: hose from Wellspring Site Prep: mow, suppression layers, solarize

Additional Notes (access, regulations, etc.): public → signage required; parking lot for material drop-off



Species (think about colour & bloom time):

1. *Monarda fistulosa* (mid-late)
2. *Fragaria virginiana* (early)
3. *Arenaria canadensis* (early-mid)
4. *Solidago canadensis* (mid-late)
5. *Aquilegia canadensis* (early-mid)
6. *Rudbeckia hirta* (mid-late)
7. *Penstemon hirsutus* (early-mid)
8. *Symphoricarpos naevae-angliae* (late)
9. *Eutrachium maculatum* (mid-late)
10. *Asclepias tuberosa* (mid-late)
11. *Oenothera biennis* (mid-late)
12. *Pycnanthemum incanum* (mid-late)
13. *Helianthus divaricatus* (mid-late)
14. *Pachira aurea* (early-mid)
15. *Erigeron strigosus* (early-mid)

*note: each clump would have multiple individuals, you could have many more species - this is just a simplified example of how you might begin your design.